

The background of the top half of the image features a close-up of a person's face with a white wireframe overlaying the eyes and nose, indicating facial recognition technology. To the left, there are several semi-transparent UI elements: a circular gauge with the Verint logo and the text 'INTELLIGENCE POWERED SECURITY™', a small circular waveform icon, and a larger rectangular panel titled 'IDENTIFICATION' containing fields for 'NAME: JOHN', 'LAST NAME: SMITH', 'CODE: 1725231', and 'HISTORY: MISSING'. Below this panel is a 'PROFILE' section with a plus sign icon. The overall aesthetic is dark and technical, with green and orange accents.

VERINT
INTELLIGENCE POWERED SECURITY™

FACEDetect

YOUR INFRASTRUCTURE, TODAY'S ENVIRONMENT

**By overcoming traditional limitations
in video-based biometric analysis,
FaceDetect allows you to find threats buried
amongst crowds or hidden to the naked eye.**

Finding a suspect in low light views? **Yes.**

Using a photo from their past? **Yes.**

Even if they don't look the same today? **Yes.**

All that and more with accuracy that can scale.



A powerful and versatile way to recognize threats

VERINT FACEDETECT

Verint FaceDetect is a powerful and versatile video analysis solution that can provide situational intelligence to security operations centers through powerful facial recognition technology. The system can detect, track and alert on persons-of-interest appearing in video surveillance streams in real-time, across multiple sites and thousands of cameras simultaneously, returning results in seconds on live video analysis. Customers can easily implement this highly effective security tool, which is designed with deep learning technology to overcome traditional challenges occurring in real-life situations. Verint FaceDetect accounts for changes in age of up to 20 years prior to current appearance; brief visibility of face (less than a second) in the camera's field of view, indifference to various ethnicities, obstructed facial views due to disguises, changes in hair, facial hair, makeup, hats, etc., the handling of low or changing light conditions all while performing real-time n:n comparison against multiple databases and watch-lists. The system's real-time

and forensic-search recognition capabilities and utilization of large detection databases can change how quickly and efficiently you can investigate a case. The solution allows security professionals to determine who poses a threat, and leaves the identity matching responsibility to the trusted, highly reliable system.

Utilize Real-Time Intelligence to Secure Your Environment

Verint FaceDetect offers new level of visibility that scales the effectiveness of an organization's security operations by quickly identifying faces and comparing those facial images to a customer-driven database of people of interest, known as a watch-list (both black and white lists.) Tens, hundreds, even thousands of faces can pass through the field of view of any customer camera across multiple sites and be identified as a match to those predetermined persons of interest.



12 CHALLENGES VERINT FACEDETECT OVERCOMES TO SUCCEED IN YOUR ENVIRONMENT

ACTIVE AVOIDANCE



Style Changes



Disguised

SITUATIONAL



Changing/
low Light



Workwear



Multiple People
in a Scene



Brief View
(<1 second)

NATURAL



Aging
(up to 20 years)



Ethnicity-
Independent



Indoor/
Outdoor



Angle/
Partial View



PTZ



Mobile/
Wearable Input



+ CORRECTLY IDENTIFY PERSONS OF INTEREST USING THE MOST ACCURATE MATCHING ALGORITHM IN THE INDUSTRY

Verint FaceDetect meets the needs of security-conscious organizations by utilizing the most accurate matching algorithm in the industry. The system features the highest true positive rate / lowest false positive rate available, generating one (1) false alarm per 25,000 faces identified. This accuracy is realized across difficult scenes, where faces may be obstructed, where there is variance in the age from the reference photo and the face detected, and across ethnicities. The accuracy of the system has been proven against varying profile angles, crowded fields of view, difficult lighting environments, and against situations when people only appear briefly, even down to 1/10th of a second.

FAST, ACCURATE IDENTIFICATION LEADING TO SUCCESSFUL RESPONSES				
Number of Faces Within View	Action to Add Person to Watchlist	Identification to Alert	Identification Accuracy	Forensic Video Analysis Rate
UNLIMITED	SINGLE CLICK	< 2 SECONDS	99.998% TRUE-POSITIVE	ANALYZE 1 HOUR OF VIDEO IN 6 MINUTES

Identifying Faces from Any Angle, with Low Light, Using the Lowest Required Face Image Size in the Industry

Verint FaceDetect enables customers to view many faces within a field of view, even proving effective with face image sizes as small as 45x45 pixels, the lowest known effective size in the industry. Often times it is difficult to capture individual faces looking straight into a camera; Verint FaceDetect was designed with this in mind and excels at identifying multiple faces within a field of view, at any angle, with any light variation. This allows customers the optimal flexibility in matching an identified person of interest to nearly any face appearing in a camera's field of view.

Mission Critical Force Multiplier to Protect Against Universal Threats

Verint FaceDetect provides Intelligence Powered Security™ to users facing threats that extend beyond their capacities to identify, validate, and respond. With both real-time and investigative capabilities, Verint FaceDetect can leverage a stored database of facial images and do live comparison with video surveillance, and without question providing a scalable mechanism that works around the clock to ensure that those you know are threats are immediately flagging security of their presence today, tomorrow, and for many years into the future.



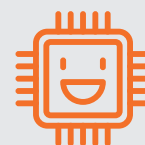
**THE MOST ACCURATE
MATCHING ALGORITHM
IN THE INDUSTRY**



**THE HIGHEST TRUE
POSITIVE RATE / LOWEST
FALSE POSITIVE RATE**



**FAST AND EASY
TO DEPLOY**



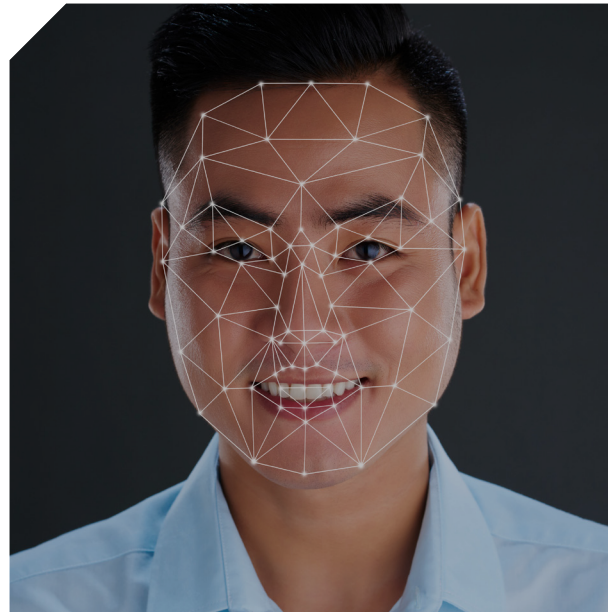
**TECHNOLOGY
DESIGNED FOR
REAL-LIFE SITUATIONS**



+ QUICK AND EASY DEPLOYMENT THAT ACHIEVES INCREDIBLE RESULTS

Build and Leverage a Highly Flexible Security Watch-lists

Customers can build their security persons-of-interest list by importing basic, static facial images as well as video surveillance still images detected through video analysis or even other sources like a personal photo or social media picture. By aggregating these images, customers can label and add notes to the individual profiles and use them for future identification reference. The system also enables the operator to take those selected images and identify where those individuals have been detected in past video surveillance situations – a valuable capability in understanding the extent of a security or operational threat. Whitelists are available to create a filter for known, trusted people in validated camera views, and alert if those individuals, such as contractors, enter secure areas they are not permitted to.



EASE OF DEPLOYMENT TO MINIMIZE SET-UP COST				
Real-Time Cameras per Server GPU	Per-Camera Set-up Time	Open Integration to any Camera	Multiple Site System Scale	Face Image Database Scale
10 CAMERAS	< 1 HOUR	1 MP (720P) OR HIGHER	100,000 CAMERAS	200 MILLION

Quickly Deploy Verint Face Recognition on any IP Camera, with Cost-Efficient Hardware +

Verint FaceDetect is fast and easy to deploy. It was designed to be cost efficient and can work seamlessly with your existing equipment and network architecture to capture and analyze multiple streams of video from any IP video camera chosen by the customer. This model eliminates the primary cost and proprietary device concerns associated with having a sole provider of camera hardware. This freedom gives customers the highest level of flexibility and choice in order to optimize their security deployment.

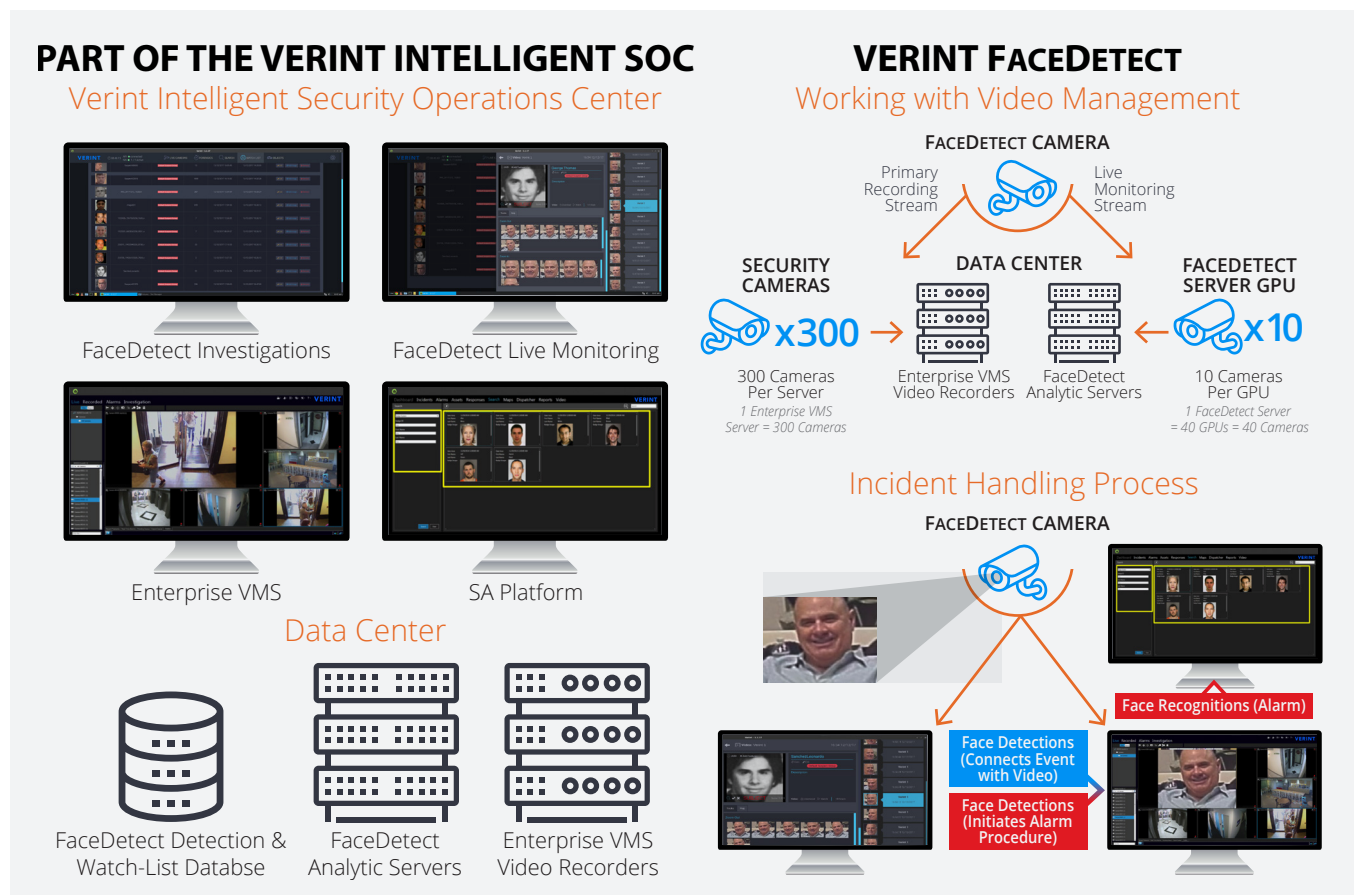
Verint FaceDetect offers organizations an intelligent methodology to help keep people, property and assets safe by confidently mitigating the risk posed by suspicious and identified nefarious behaving individuals.



Leverage your existing cameras to scale your operation

Integrate with Verint's Intelligent Security Operations Center

Verint FaceDetect was designed to work comfortably within the security operations center. Live detections from recognition matches can be easily shared with Verint Enterprise VMS, and if rules dictate, can be escalated to Verint Situational Awareness Platform. This advantage is significant in enhancing the ability of operators to respond by launching Verint Video Tracker sessions or using Dispatch Manager to assign to closest responder to the scene.



About Verint Cyber Intelligence Solutions

Verint® Cyber Intelligence Solutions is a leading provider of security and intelligence data mining software. Our solutions are used for a wide range of applications, including predictive intelligence, advanced and complex investigations, security threat analysis, electronic data and physical assets protection, as well as for generating legal evidence, and preventing criminal activity, terrorism and cyber-attacks. We deploy our solutions globally for governments, critical infrastructure and enterprise customers.

About Verint Systems Inc.

Verint® (NASDAQ: VRNT) is a global leader in Actionable Intelligence® solutions with a focus on customer engagement optimization, security intelligence, and fraud, risk and compliance. Today, more than 10,000 organizations in 180 countries count on intelligence from Verint solutions to make more informed, effective and timely decisions.

Use of these products or certain features may be subject to applicable legal regulation. The user should familiarize itself with any applicable restrictions before use. These products are intended only for lawful uses by legally authorized users. Not all features may be available in all jurisdictions.

Unauthorized use, duplication, or modification of this document in whole or in part without the written consent of Verint Systems Inc. is strictly prohibited. By providing this document, Verint Systems Inc. is not making any representations regarding the correctness or completeness of its contents and reserves the right to alter this document at any time without notice. Features listed in this document are subject to change. Not all functionality is available in all configurations. Please contact Verint for current product features and specifications. All marks referenced herein with the ® or TM symbol are registered trademarks or trademarks of Verint Systems Inc. or its subsidiaries.

All rights reserved. All other marks are trademarks of their respective owners. v1159.180130

